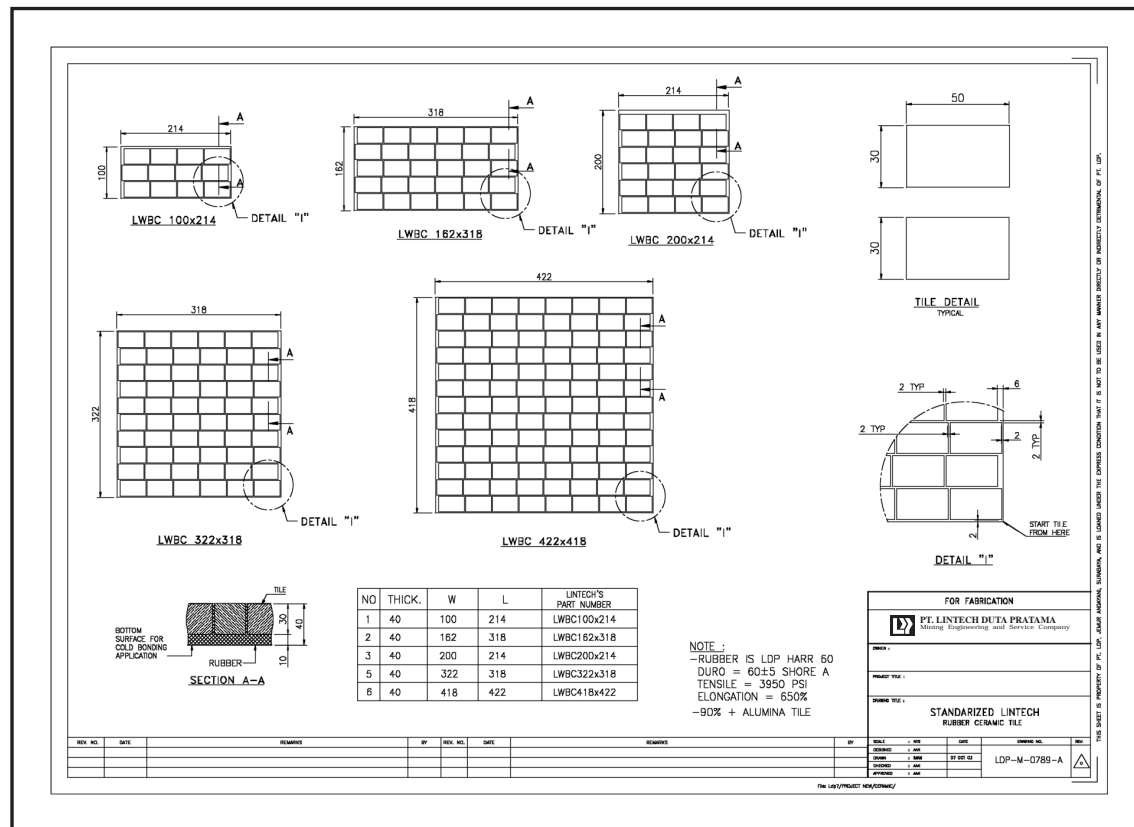
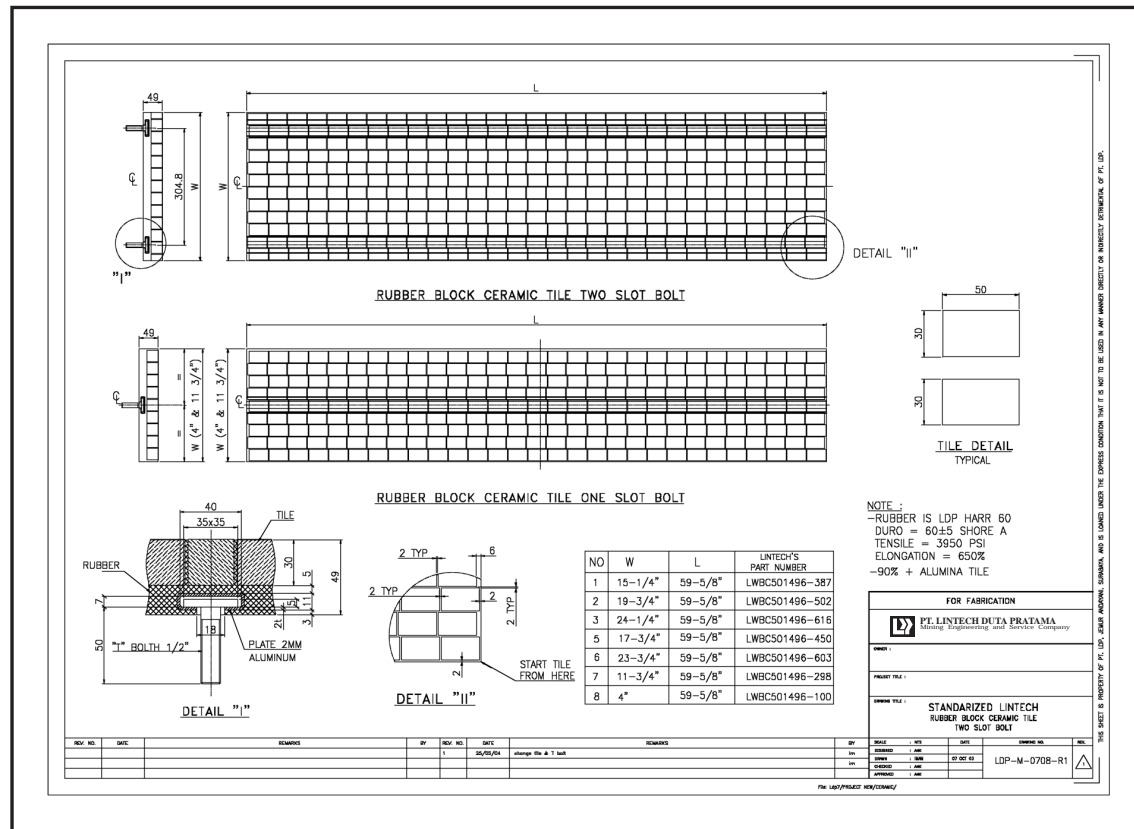


LINTECH WBC

ABRASION and IMPACT RESISTANCE WEAR BAR CERAMIC



LINTECH WBC

ABRASION and IMPACT RESISTANCE WEAR BAR CERAMIC

THE ABRASIVE TOUGH ELASTO TO SHOCK LINING MATERIAL

LINTECH WBC is recently introduced product for application combine extreme abrasive with load shock. This standard or custom lining material categorized as Abrasion Tough Elasto Shock. This lining material is offer extreme abrasion and impact resistance by combining the toughness of ceramic with the excellent shock absorbing properties of natural rubber.

The lining material uses specially shaped ceramic blocks that are able to move in any direction in a specially designed RUBBER matrix. This unique arrangement means that each ceramic block acts as if it is mounted on a shock absorber. The result is not only extreme impact and abrasion resistance, but also an increased wear area.

LINTECH WBC - The Abrasion Tough Elasto Shock is suitable for a wide range of applications and is likely to prove a particularly efficient solution when used in steelworks, cement works and hard rock quarrying (coal, nickel, copper ore transport).

LINTECH WBC is designed, manufactured and distributed by LINTECH which can be supplied with embedded steel mesh for simple mechanical slotted fixing or cold bonding to chutes and hoppers with the standard size or customized to suit steel body shapes and dimensions.

FEATURES

- 1 EXCELLENT Resistant to wear
- 1 Elastic Shock/impact absorption capability along with extreme abrasion resistance
- 1 Easy to install at various shape of chutes/ hopper/ protected body surface, with standardized dimension, cut to fit at field with ceramic hand cutting tools
- 1 Ceramic block hard to peel off from back rubber due to key way lock at ceramic block and chemical hot bonding
- 1 Reduce downtime, material and labor cost up to 400% compare to stand alone ceramic or steel wear resistance lining.

FIELDS OF APPLICATION

- 1 Lining for containers, silos, hoppers, conveyor chutes and a wide range of bulk and gravel conveying and transporting device.
- 1 Dry or wet bulk materials at wide range particle sizes transport or storing.
- 1 Area requires protection against wear, corrosion and noise, improves self cleaning properties.
- 1 Application field: Heavy Mines, Aggregates, Bulk Terminal, Power Generation, Cement Plant

LINTECH WBC

ABRASION and IMPACT RESISTANCE WEAR BAR CERAMIC

METHODES OF APPLICATION

LINTECH WBC is well bonded with any famous Adhesives (TIPTOP, CHEMLOCK, MEGUM) for cold bonding direct to steel body or to pre cut 4 – 6 mm thick steel plate with welded bolt to mounting to steel body at field or use Lintech WBC standard supplied aluminum slotted rail for tee bolted to chutes/hopper steel body. Lintech WBC standard size (wide and length) can be cut to fit hoppers/chutes body size with regular ceramic circle cutting tools.

SUPPLY AVAILABILITY

Reference No.	DIMENSION mm	WEIGHT (kg)
LWBC 501496-100 (slot)	101 x 1496 x 49mm	20.0
LWBC 501496-298 (slot)	298 x 1496 x 49mm	55.0
LWBC 501496-387 (slot)	387 x 1496 x 49mm	66.0
LWBC 501496-450 (slot)	450 x 1496 x 49mm	90.0
LWBC 501496-502 (slot)	502 x 1496 x 49mm	100.0
LWBC 501496-603 (slot)	603 x 1496 x 49mm	120.0
LWBC 501496-616 (slot)	616 x 1496 x 49mm	122.0
LWBC 100 x 200 (tile)	100 x 200 x 40mm	2,4
LWBC 200 x 200 (tile)	200 x 200 x 40mm	4,8
LWBC 150 x 300 (tile)	150 x 300 x 40mm	5,4
LWBC 300 x 300 (tile)	300 x 300 x 40mm	10,8
LWBC 400 x 400 (tile)	400 x 400 x 40mm	19,2

OTHER DIMENSIONS, BONDING AND MECHANICAL FIXING PLEASE CONTACT LINTECH OFFICER

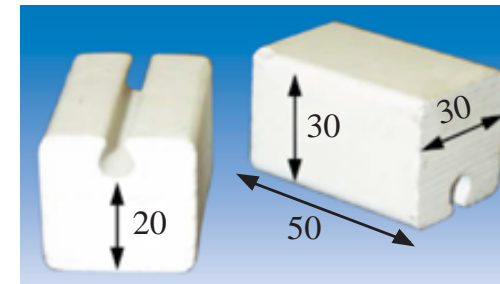
MEAN PHYSICAL PROPERTIES

LINTECH WEAR BAR CERAMIC LINING MATERIAL					
Technical characteristics					
HARR60 (ELASTO SHOCK Rubber Back)			HIGH AL CERAMIC (90% Alumina Ceramic)		
		TEST STD			TEST STD
1	MATERIAL	NR	DIN ISO 1629	MATERIAL	AL 203
1	Specific Weight	1,09 g/cm ³	DIN 53 479	Specific Weight	3.6 g/cm ³
1	Tensile Strenght	3950 Psi	ISO37-1977	Tensile Strenght	221 Mpa
1	Elongation	650 %	ISO37-1977	Surface Finish	0.1
1	Tear Strenght	105 N/mm	ISO34-1979	Water Absorption	0 %
1	Hardness	60 Shore A	DIN 53 505	Hardness	79 HRC
1	Abrasion at 5N	119 mm ³	DIN 53 516	Fracture toughness	3-4 Mpam ^{1/2}
1	Resilience	68 %	DIN 53 512	Stiffness/weight at 20° C	77 Gpa/g/cm3
1	Temperature range	-40° C to 70° C		Flextural Strength	338 Mpa
1	Color	BLACK		Maximum work temp	1500 C
				Color	WHITE

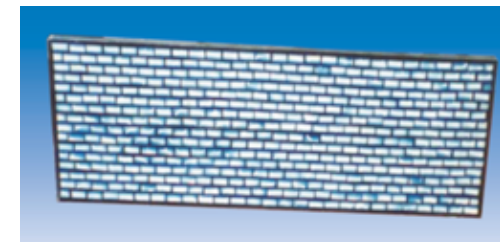
LINTECH WBC

ABRASION and IMPACT RESISTANCE WEAR BAR CERAMIC

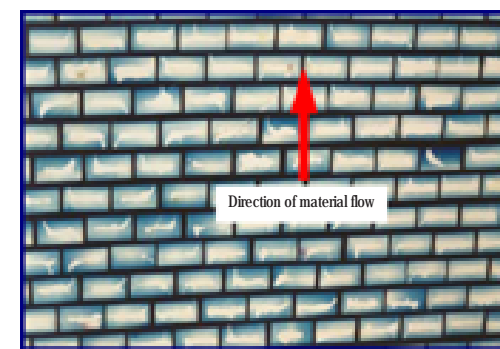
PLEASE CONTACT LINTECH REPRESENTATIVE FOR YOUR ASSISTANCE



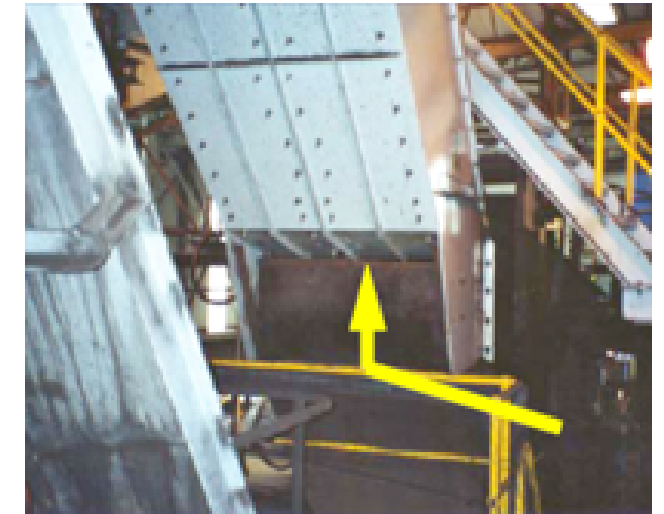
Specially shaped ceramic blocks with mechanical lock key way in the back face of the block to ensure strong block holding to flexshock rubber



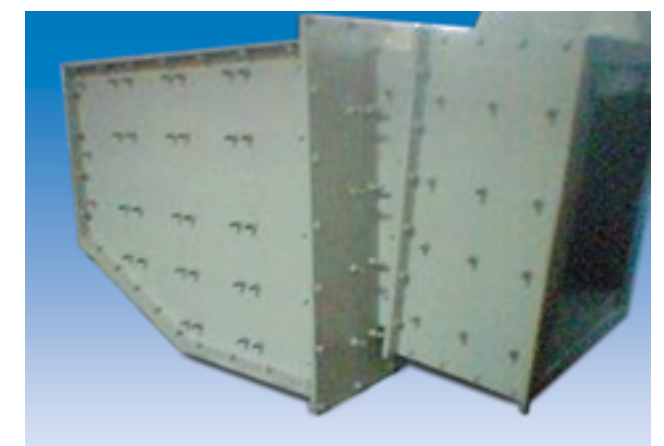
Complete ready to install, one of standard size to fit any surface. Overall liner thickness are is 49mm total with 30mm at ceramic and 19 rubber with mechanical fixing and 40mm total thickness with 30mm at ceramic and 10mm rubber for cold bonding. The small ceramic blocks combined with the rubber matrix allows the liner to be used in high impact application which would normally prohibit the use of ceramic.



Blocks are arranged in a staggered formation such that there are no inline joints in the direction of material flow across the liner pattern against the direction of flow and back rubber



Back view of the chute into which the liner was bolted. The liner is situated at the main impact zone in the chute at the change o direction point



View of launder box wet application which the liner was bolted. The wear bar is installed at "dead bed" area and bottom surface.